



PROLOGUE

November 2016

Dream Team Brings *An Inspector Calls* to Life at AFD [Tickets on Sale](#) for November 11–20

AFD Theatre's new production of *An Inspector Calls* taps a lot of Friends—and the excitement is electric.

When the curtain rises at AFD on November 11, anticipate a production that people are already calling “magical.” Credit may be due to the fact that the team behind it contains a lot of Friends—old and new—united behind a play that has a lot of meaning, a lot of suspense, and a lot of opportunity to exercise stagecraft.

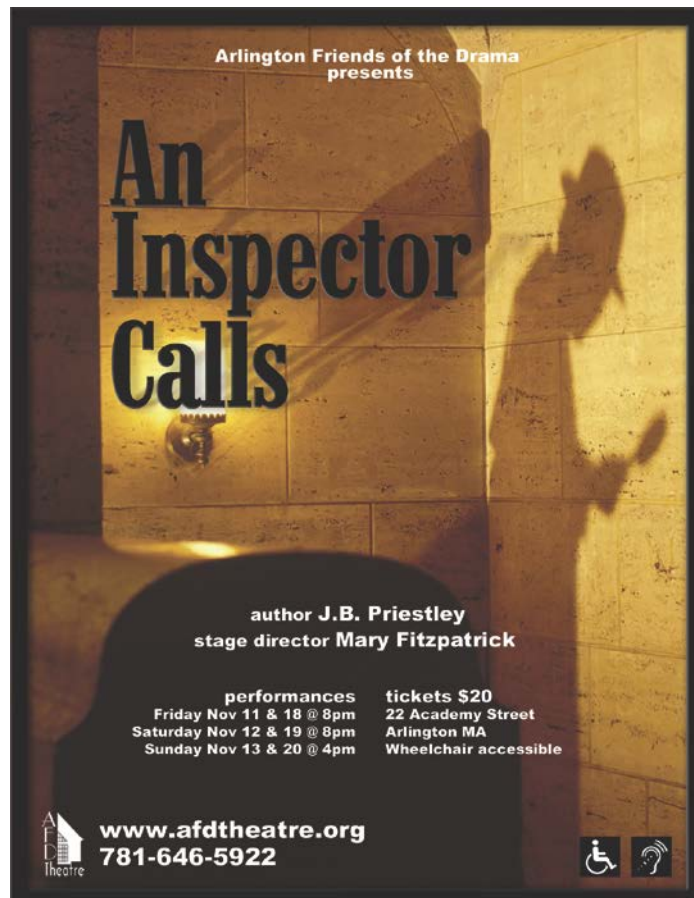
Bringing *An Inspector Calls* to life at AFD is the realization of a lifelong dream for director **Mary Mark Fitzpatrick**.

“When I read it in college, it literally changed my life,” she says. “It illuminates everything about the consequences of our behavior and actions.” She’d seen it several times over the years, including the production at Concord Players in 1997, directed by her husband at the time, the late Denis Fitzpatrick.

When the Play Reading Committee put out the call for directors to nominate plays they want to stage, Fitzpatrick jumped at the chance to put in a bid for *Inspector*. When it was confirmed that AFD would mount the play, she booked a flight to London to catch [the revival on the West End](#), where it’s been running since 1992.

“I had a ticket for the matinee,” she says, “and it was so good, so compelling, that as soon as it was over, I went to the box office and bought a ticket for that same evening.”

Fitzpatrick watched the play from fourth row center, and then from the balcony, finding new insight from each perspective. “It was just riveting, a wonderful production.”



And she enjoyed the culture of theater in London, where *Inspector* is a classic, a standard taught in school in the same way *Our Town* is taught in the U.S. “Like we talk about the Red Sox here, they talk about theater. Everyone around me had strong opinions about the production—even the hotel clerk.”

Fitzpatrick has a clear passion for the play. “The writing is so good, it keeps my interest every time, even when we’re blocking. It’s unique in that it’s an important play, with a clear message, but it’s also a mystery, and it’s very suspenseful.”

"You really don't know what's going to happen—I call it a mystery with meaning," Fitzpatrick says. "You know, we see so much violence and mayhem on TV, and it's all meaningless. But this has a message, which makes it so much better."

The production manager, **Ginger Webb**, concurs, "You don't know what's going to happen; you're entertained the whole time."

Fitzpatrick brought her excitement back to AFD, where she recruited a "dream team"—and they're feeling the buzz of chemistry strengthened by a great script.

"It's been so exciting," says Fitzpatrick. "Just the way you want a show to go. Everyone is terrific, and they've been working together as a team so effectively."



Iain Bason

On stage, **Iain Bason** (longtime Friend and former president of AFD) plays the role of the patriarch, Arthur Birling. Almost 20 years ago, he played the role of the son, Eric Birling, in the Concord production. "I didn't think I was old enough, but Mary reached out, and I realized it could work," Bason says.

"It's funny to do both sides—father and son—as I have so much sympathy for the son. But we're trying to find that mix of conflict and connection that I found with Jack Sweet when he played the father."

Bason says he's struggling to find the humanity of Arthur. "He comes across as so bombastic and self-satisfied, but you know he that loves his wife and his children, even if he's oblivious about the rest of the world and the people who work in his factory. I'm trying to make him three dimensional."

Teri Muller, who has been active in AFD for many years, plays the mother, Sybil Birling. "We're so happy to have her back on stage. She's been delightful," says Fitzpatrick.

Fred Robbins stars as the Inspector. Fitzpatrick notes, "He's so experienced and powerful. He just played King Lear last summer, and he has that presence on stage." Robbins appeared in ***Proof*** and ***I Never Sang for My Father*** in previous seasons at AFD.



Teri Muller



Fred Robbins

Also returning to the AFD stage, for the third time, is **Randall Lawrence-Hurt** as Gerald Croft. He had roles in ***Clybourne Park*** and ***The Importance of Being Earnest***. "Randy is a great addition to the cast; he's professional, talented, and a pleasure to know," Fitzpatrick comments.

Newcomers include **Kate Flanagan** as the daughter, Sheila Birling, and **Alex Langham** as the son, Eric Birling. Langham recently moved to Arlington, having just graduated high school.

Fitzpatrick says, "Alex came in and just nailed it in the audition. He's so good."



Kate Flanagan



Alex Langham

Behind the scenes, the team is working day and night, and their efforts are combining beautifully. **Ruth Neeman**, an architect by trade, designed the sets, and it's fascinating. "She's won many awards," notes Fitzpatrick, "by using the setting to set the tone and mood about a play. Here she's combined special effects and impressionism."

Mark Bastoni is building the sets and pulling in help from many quarters; he credits **Charlie Carr, Mike Cunningham, Doug Turner, Brian Higgins, Stu Kazin** and others for working above and beyond in building a set that, in Fitzpatrick's words, "is of such high quality, the crew is making it a permanent addition to the lobby when the play ends."

Greg Mancusi-Ungaro is doing light design, and has great concepts to use lighting to enhance the drama and to evoke a sense of mystery.

Fitzpatrick asked **Valerie Forgione**, who composed original music for last season's production of **Vanya and Sonia and Masha and Spike**, to write original music for the production. Fitzpatrick notes, "We're so tuned in to music, through movies and TV, we rely on it to set the mood. We're using it to heighten suspense in this production."

Linda Burt, a talented actress who stepped in at the last minute in last season's **Vanya**, is handling costumes. In her day job she is the costume manager for Salem State College, and she has designed costumes for many area theaters.

As the team pushes through to the opening night in November, everyone is working toward something special. "It's so rare when it all clicks," says Fitzpatrick, "when all the elements come together. You can have a great script, set, cast, and crew, but then you need the chemistry. It starts with trust and a belief in what you're doing. We have that – now we just have to see if the magic gels!"



An Inspector Calls Director Mary Mark Fitzpatrick

Show Dates for *An Inspector Calls*

November 11 at 8 PM (with champagne reception)

November 12 at 8 PM

November 13 at 4 PM (with talkback)

November 18 at 8 PM

November 19 at 8 PM

November 20 at 4 PM

[Tickets \\$20 On Sale Now](#)

How Many People Does It Take to Put on an AFD Production?

From director to set crew, AFD's upcoming production of *An Inspector Calls* relies on the talents and energy of an outstanding production crew.

Production Managers: **Evelyn Corsini Alcorn and
Ginger Webb**

Director: **Mary Mark Fitzpatrick**

Stage Manager: **Clare Livak**

Set Designer: **Ruth Neeman**

Set Technician: **Mark Bastoni**

Costume Design: **Linda Burt**

Lighting Design: **Greg Mancusi-Ungaro**

Projection Design: **Michael Patterson**

Sound Design: **Jason Rosenman**

Lighting Board: **Cynthia Marsden**

Properties: **Charlotte Kelley**

Hair and Makeup: **Marc Capizzi and
Dot Santos**

Original Music: **Valerie Ellen Forgione**

Audition Aides: **Evelyn Corsini Alcorn, Alyssa
Allen, Anelise Allen, Donna
Allen, and Jennifer Smith**

Set Crew:

**Mark Bastoni, Charlie Carr,
Mike Cunningham '33', Brien
Higgins, Stu Kazin, Margaret
Marks, Steve Poltorzycki, Don
Richardson, Doug Turner,
Gareth Williams**

Casting Committee: **Nancy Finn and Dot Santos**

Box Office: **Gareth Williams**

Publicity: **Mary Babic**

Show Photographer: **Leslie Maiocco**

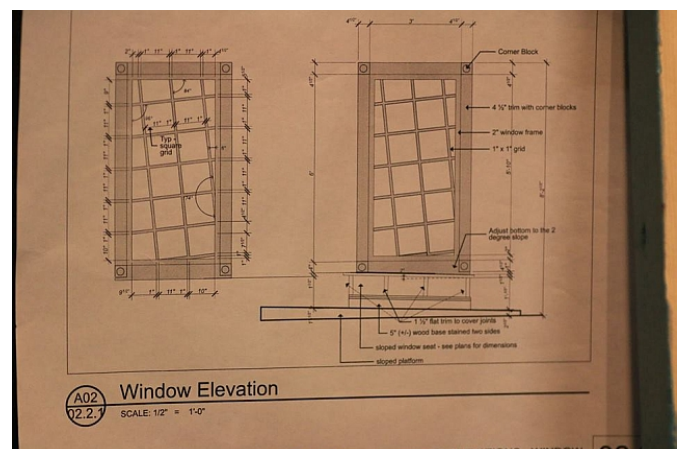
Refreshments: **Lis Adams and Evelyn Corsini
Alcorn**

Program Art: **David Foucher**

Program: **Nancy Rogier**

AFD Social Media Manager: **Kevin Mark Kline**

AFD Webmaster: **Mary Babic**



AFD set build crews put in an amazing level of details into our shows. Take a look at these blueprints for *An Inspector Calls*! Shown left is Mark Bastoni, Gareth Williams, and Brien Higgins from the talented set crew for the production.

President's Corner: A Note from David Warnock



In the coming season we will pause to give thanks for what we have. Here are several things that I believe AFD can truly be grateful for:

- Producing live theater.
- Producing live theater confidently for 94 seasons, and counting, in our own building. Why are we so grateful? *Because we are still here.*
 - The Winthrop Playmakers sold their building in 2014 and this October, after 78 seasons, closed their final production for the foreseeable future.
 - The Wellesley Players, who already bear the burden of renting performance space in the Arsenal Center for the Arts, must vacate their Allston rehearsal and set-building space in early January, causing numerous hardships.
 - The Arlington Center for the Arts is losing its 27-year home in 2017 because the town is reclaiming the Gibbs building as a school. However, the ACA has an ambitious plan to raise funds for renovating space next door to us in the Central School Building (aka the Senior Center). We wished them well and offered support at their October 27 ribbon-cutting celebration. They deserve your support as well.
- The generosity of our volunteers and audience who made the October 15 Daniel J. Rabone Memorial Fund benefit concert an emotional and financial success.
- The producers, directors, artists, musicians, crews, actors, and audiences that continue to bring life to our productions. (I've said this before and I'll keep on saying it.)
- And you, our friends and members, without whom none of this is possible—or worth doing in the first place.

Looking forward to seeing you at our theater, and thank you.

David Warnock, President

Friendly

Please send your friendly news to Dot Santos at dotsantos@comcast.net.

Donate to AFD Theatre at AmazonSmile!

When you shop at smile.amazon.com, it's the same thing as shopping on Amazon with the added bonus that Amazon will donate a portion of the purchase price to AFD Theatre. **HOW GREAT IS THAT?**

On your first visit to smile.amazon.com, select Arlington Friends of the Drama Inc before you begin shopping. Amazon will remember your selection, and then every eligible purchase you make at will result in a donation to AFD Theatre.

BOX OFFICE CORNER

Order your tickets for *An Inspector Calls* online at <http://www.afdtheatre.org/>. All ticket exchanges must be made through the Box Office. The easiest way to contact the box office is by email at office@afdtheatre.org, or you may call 781-646-5922. All phone messages will be checked and returned by a volunteer.

Information on how to order your tickets online was emailed to all members and subscribers, including your password. Make sure to add afd-members@comcast.net to your list of safe senders in order to receive all AFD email.

Announcing the Cast of *Sunset Boulevard*!

Director **Kevin Mark Kline** is thrilled to announce the cast of *Sunset Boulevard*, which opens March 3, 2017. Auditions were wonderful and well attended! Show dates are March 3–19. [Reserve your tickets here.](#)

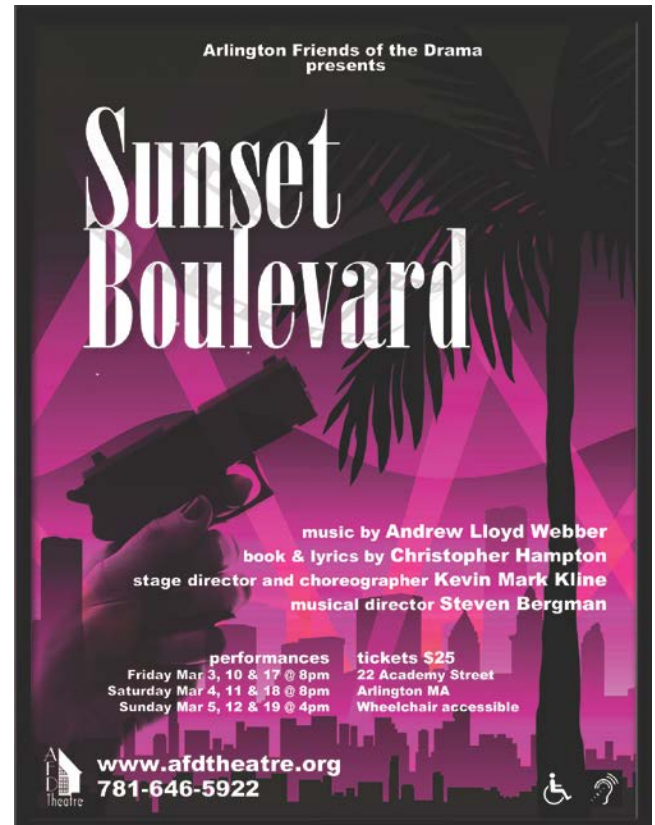
Director and Choreographer: **Kevin Mark Kline**
Musical Director: **Steven Bergman**
Co-Producers: **Ginger Webb and Marjorie Hilton**

Cast

Norma Desmond:	Janet Ferreri
Joe Gillis:	Trey Lundquist
Max von Mayerling:	Jim Ansart
Betty Schaefer:	Heather Hannon Rufo
Artie Green:	Patrick Harris
Cecil B. DeMille:	Charlie Carr
Sheldrake:	Ira Kantor
Manfred:	Paul Dingman
Morino:	Nick Stevens
Wunderkind:	Robert McCall

Ensemble

Paul Dingman	Dilara Eynula
Nabila Hossain	Ira Kantor
Adam Kaplowitz	Alexis Kirkpatrick
Robert McCall	Emily Jane Morris
Krystal Scott	Nick Stevens
Lisa Tierney	



The Fine Print

The Prologue is a publication of Arlington Friends of the Drama, published four to five times a year. Submissions of articles, information, ideas, and feedback are welcome from members, and may be submitted to Nancy Rogier, Prologue Editor, at nancyrogier95@gmail.com or by calling 781-863-1186. Annual membership/subscription to AFD is \$70. Membership includes a ticket to each show, opportunities to get involved in all aspects of the theater, The Prologue, and various social activities.

Prologue Staff

Nancy Rogier, Editor
Tom Lawrence, Phyllis Uloth, Proofreaders

Thank You ONCE AGAIN to
SHATTUCK ACE HARDWARE STORE



for paying for the printing of tickets
for our 94th season!

Subscribe to our YouTube channel! Like us on Facebook! Follow us on Instagram!

AFD YouTube channel: <https://www.youtube.com/user/AFDTheatre>

Facebook Group: <https://www.facebook.com/groups/36812824184/>

Facebook Page: <https://www.facebook.com/AFDTheatre/>

2016–2017 AFD Season

September 9–25, 2016

The 25th Annual Putnam County Spelling Bee

Music, Lyrics, and Book by William Finn and Rachel Sheinkin

Stage Director and Choreographer, Justin McCoubry

Music Director, John D. Eldridge

In hilarious, touching, and catchy songs, contestants reveal their hopes, struggles, and passions as they make their way through the spelling bee. This show even involves the A-U-D-I-E-N-C-E! About an hour before the show begins, audience members are given a chance to sign up and participate in the show as spelling-bee contestants. Drama Desk Winner for Best Book, Best Director, Best Ensemble, and Best Musical, *The 25th Annual Putnam County Spelling Bee* is a delight for young and old, and it's worthy of much applause.

November 11–20, 2016

An Inspector Calls

By J.B. Priestley

Director, Mary Fitzpatrick

One of the classics of 20th-century English theater, *An Inspector Calls* is a psychological drama about a prosperous family living in a comfortable home in the Midlands industrial region of England. The family is visited by a man calling himself Inspector Goole, who questions the family about the death of a young working-class woman. Everyone has a secret in this gripping mystery thriller.

March 3–19, 2017

Sunset Boulevard

Music by Andrew Lloyd Webber

Lyrics and Book by Don Black and Christopher Hampton

Stage Director and Choreographer, Kevin Mark Kline

Music Director, Steven Bergman

Sunset Boulevard weaves a magnificent tale of faded glory and unfulfilled ambition. Silent movie star Norma Desmond longs for a return to the big screen, having been discarded by Hollywood with the advent of "talkies." Her glamour has faded in all but her mind. Norma meets failed Hollywood screenwriter Joe Gillis in dramatic circumstances, and their subsequent relationship leads to an unforeseen and tragic conclusion. Andrew Lloyd Webber's score is one of his best. From the rich symphonic ambience of its lush overture, *Sunset Boulevard* captivates dramatically, musically, and visually.

May 18–May 21, 2017

The Graduate

A Play Adapted by Terry Johnson Based on the Novel by Charles Webb
and the Motion Picture Screenplay by Calder Willingham and Buck Henry

Director, Joe Stallone

This is the first play adaptation of the classic novel and cult film. Benjamin's got excellent grades, very proud parents and, since he helped Mrs. Robinson with her zipper, a fine future behind him. A bittersweet comedy that is rich, full, and funny, *The Graduate* gives off starlight. Playwright Terry Johnson has been described as "that rare creature: a moralist with wit."

A Company of Friends
22 Academy Street
Arlington MA 02476
Phone: 781-646-9337

Ticket line: 781-646-5922
Web Address: www.afdtheatre.org

